

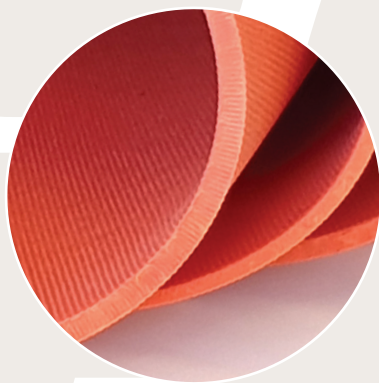
FOCUS ON

Calendered Natural Rubber Sheetting

Technical Natural Rubber is one of the many premium grade calendered sheet products available from J-Flex.

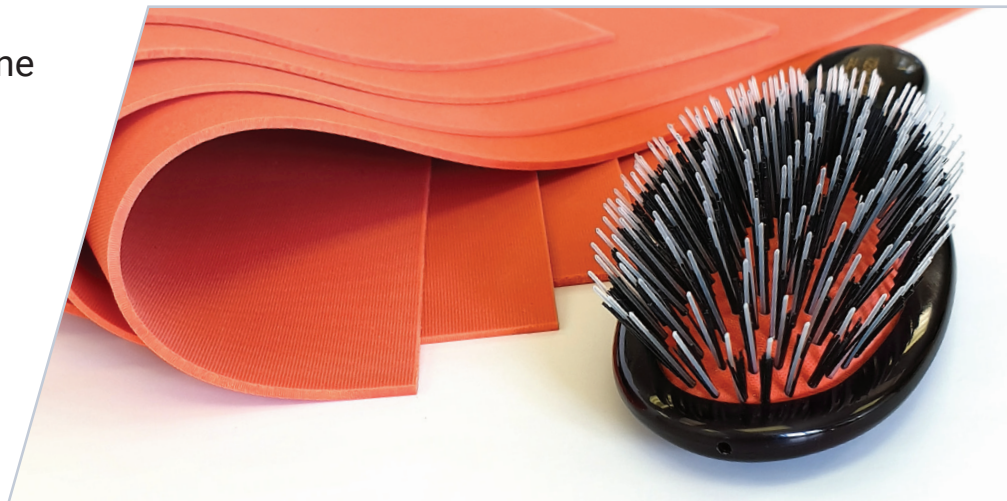
Natural Rubber is supplied in many different formats and extra special compounding can bring added technical properties, including:

- High resilience
- Good resistance to flexing
- High tensile and tear strength.
- Fatigue resistance
- Easily cut, punched or converted into finished parts.



One special application example:

Used as a soft cushion on high quality hair brushes.



Other Applications:

- Non-return flaps on face masks
- Membranes
- Seals & Gaskets
- Food Quality (FDA) Bakery Sheets

Typical Product & Material Details:

Colours: Orange, Red, White, Blue & Black

Hardness: 40 to 70° Shore A (+/-5°)

Density: 1.15

Tensile Strength: 15 MPa

Elongation: 600%

Thicknesses: 1.5mm, 2.0mm and 3.0mm

Finish: Fabric impression both sides or smooth both sides

Roll Sizes: 1200mm to 1600mm wide x 20 metres long.

J-Flex are well known for the highest level of quality, customer service and technical expertise - put us to the test with your requirements.



J-FLEX
Rubber Products

Units 1 & 2, London Road Business Park, Retford,
Nottinghamshire, DN22 6HG, United Kingdom www.j-flex.com

tel: +44 (0) 1777 712400 email: sales@j-flex.com

